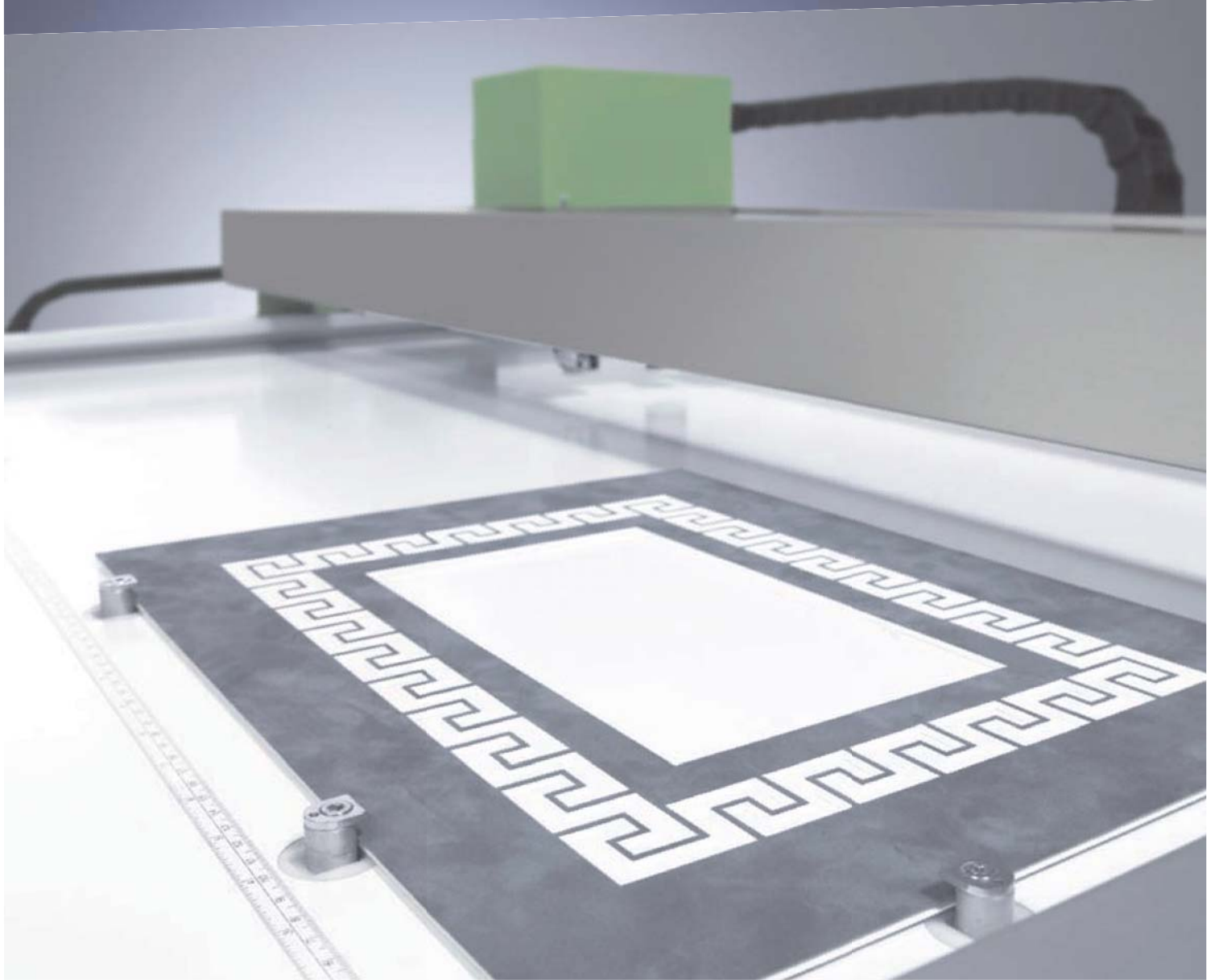




# **GUNNAR 601**

The professional way.



# DO YOU NEED A MACHINE OR A SOLUTION?

Keep yourself straight: Cutting table angle can be set ergonomically to suit individual needs.

Two heads are better than one: a 45° bevel cutting head and 90° straight cutting head.



## » THE SOLUTION

As a professional framer you will have a matcutter and perhaps a bench end guillotine or vertical board cutter. Would it not be easier if you had a solution which completes all your jobs more quickly and precisely, which eliminates quality deviations, allows for different board thicknesses and still minimizes the use of board?

The GUNNAR 601 is the solution. It offers Swiss precision, is capable of cutting right to the edge of the board and beats rival products in speed. Double mats including outside cut can be completed by the GUNNAR 601 in one operation taking only seconds. There is no need for manual intervention, not even a blade change. An all round solution in one machine

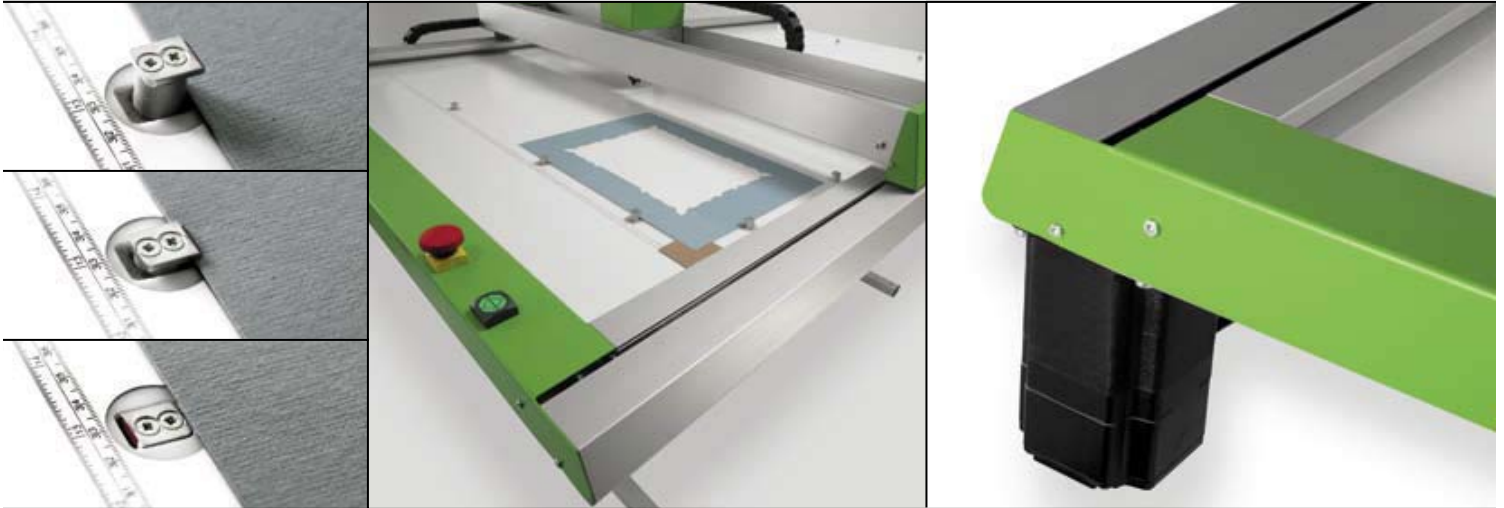
## » LEADING INTELLIGENT TECHNOLOGY

The GUNNAR 601 is the choice of leading framers worldwide, and with good reason. Designed from start to finish with efficiency in mind it relieves you from tiresome manual jobs. The cutting assembly is fitted with both a 45° and a 90° cutting head and will cut an opening and outside cut, an opening, v-groove cut and outer cut or an opening and outside cut in a double mat in one operation. This is made possible by the unique GUNNAR solution, the automatic blade depth adjustment DBD. An intelligent clamp system makes cuts possible right to the edge of the board, enabling you to save material and money. Micro step motors with 4000 steps/revolution ensure precision to all cuts. With step motors there is no mechanical wear and tear, so the GUNNAR 601 will work smoothly for years.

Unique: button clamps enable cuts to the edge in any position.

Unbeaten: The GUNNAR 601's price-performance payoff is unrivalled in its class.

Precision with high speed: the micro stepper motors operation at 4000 steps/revolution.



## ❖ TECHNOLOGY AT ITS BEST

- ❖ Optimizing waste to allow maximum board usage
- ❖ Two cutting heads with 45° and 90° angles
- ❖ Cuts openings and outer cuts in the same operation
- ❖ Automatic blade depth adjustment DBD for v-grooves or double mats without manual intervention
- ❖ Using COE-mode you can cut on 2 surfaces consecutively
- ❖ Cuts from the front and the back
- ❖ Cuts through even the hardest museum board up to 3,5 mm with ease
- ❖ Cuts formats up to 1'560 x 1'030 mm, as well as the new American jumbo boards
- ❖ Modular build facilitates simple servicing and maintenance
- ❖ Ideal for constant use and large contracts

## ❖ SUPERIOR EASE OF USE

- ❖ GUNNAR software SPT32 in a clear and familiar Windows XP design
- ❖ Software in many languages (German, French, English, Spanish, Japanese etc.)
- ❖ An extensive template gallery which includes all standard forms and openings
- ❖ Create your own graphic designs in Corel Draw and import into SPT32 with ease
- ❖ Central operation with pneumatic gauges, start and emergency stop button
- ❖ Blade change within seconds without the need for special tools
- ❖ Clamping of the boards with finger clamps permit outer cuts up to the edge of the board
- ❖ A «zero stop» and integrated ruler
- ❖ Cutting table angle can be set ergonomically (tilted horizontally, 8° or 16°)



## TECHNICAL DETAILS

### ➤ MACHINE PARAMETERS

#### GUNNAR 601 XL

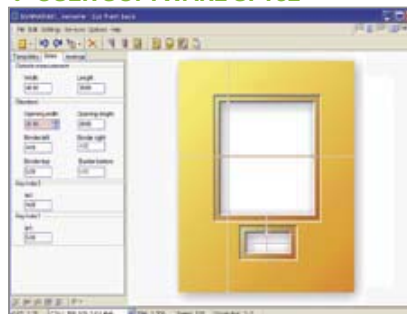
Max. board thickness	3.5 mm / 0.14"
Max. board format	1560 × 1030 mm / 61.40 × 40.6"
Dimensions (w/d/h) (when horizontal)	1992 / 1410 / 1130 mm 78.40 / 55.50 / 44.50"
Weight	135 kg
Max. cutting speed	625 mm / sec 24.6 inches / sec
Drive system	Micro stepper motors
Mount holding system	Button clamps
COE Mode	Yes
Interface	RS 232
Operating software	GUNNAR SPT32 incl.
Warranty	2 years or 200'000 openings

All details subject to change without notice.

### ➤ SYSTEM REQUIREMENTS

PC (not included in scope of supply)	Min. 1 GHz Interface RS232 (COM) Operating system: WIN95/98, NT, ME, 2000, XP (recommended) Memory: Min. 128 MB CD-ROM: Min. 8x
Power supply	230 V / 50 Hz, 3 A 115 V / 60 Hz, 6 A
Compressed air supply	Min. 6 bar Min. 90 psi

### ➤ USER SOFTWARE SPT32



More detailed information about the operating software, manuals, clipart gallery and support can be found in the detailed brochure, or at [www.gunnar-europe.com](http://www.gunnar-europe.com).

**GUNNAR**  
Pioneer in Performance

NOVAMAX INTL LLC - 8200 S Quebec St. Suite A-3 Englewood, CO 80112  
(303) 470-7226 Fax (303) 470-5773 Toll-Free 1-800-594-3380  
[www.novamaxinternational.com](http://www.novamaxinternational.com)